

**CARRYALL 100**

**Club Car**

**RELIABLE  
TRANSPORTATION,  
COMPACT SIZE**

Get everybody where they need to go without a hitch. Powerful and versatile, the Carryall 100 features a small frame with full-size performance, perfect for security, parking, or other everyday tasks where easy mobility is key.



**CARRYALL**

# CARRYALL 100

## TAKE ON TIGHT CORNERS

Easy steering gives you flawless navigation through tight spaces when it matters most.



Max Speed  
17 mph



Max Vehicle Capacity  
800 lbs



Horsepower  
14 hp (gasoline)  
3.3 hp (electric)



## OPTIONS & ACCESSORIES

Ask your Club Car sales representative for details.



Brush Guard



Fold-Down Seat



Windshield



Canopy

# CARRYALL 100



GASOLINE



ELECTRIC

|                           |                                                            |                                                       |
|---------------------------|------------------------------------------------------------|-------------------------------------------------------|
| <b>ENGINE</b>             | Kohler EFI, 4-cycle Gas                                    | 48-volt DC                                            |
| <b>HORSEPOWER</b>         | 14 hp (10.3 kW) rated @ 3600 RPM per SAE J1940             | 3.3 hp (2.4 kW) rated, peak 13 hp (9.6 kW)            |
| <b>GOVERNOR GUARD</b>     | Ground speed                                               | N/A                                                   |
| <b>BATTERIES</b>          | 12-volt 500 CCA 105 min reserve                            | Six 8-volt flooded lead acid                          |
| <b>CHARGER</b>            | N/A                                                        | E.R.I.C. Shelf Charger (650 W high frequency)         |
| <b>STEERING</b>           | Self-adjusting rack and pinion                             | Self-adjusting rack and pinion                        |
| <b>FRONT SUSPENSION</b>   | Independent leaf spring with dual hydraulic shocks         | Independent leaf spring with dual hydraulic shocks    |
| <b>BRAKES</b>             | Rear-wheel, self-adjusting mechanical drum                 | Rear-wheel, self-adjusting mechanical drum            |
| <b>PARK BRAKE</b>         | Foot operated, multi-lock                                  | Foot operated, multi-lock                             |
| <b>BODY AND FINISH</b>    | ABS with automotive paint, aluminum/ArmorFlex® finish      | ABS with automotive paint, aluminum/ArmorFlex® finish |
| <b>TIRES</b>              | 20 x 10-8, 4-ply rated, all-trail II                       | 20 x 10-8, 4-ply rated, all-trail II                  |
| <b>BED L x W x H</b>      | 27.5 x 43.5 x 11 in (65 x 111 x 28 cm)                     | 27.5 x 43.5 x 11 in (65 x 111 x 28 cm)                |
| <b>WHEELBASE</b>          | 65 in (165 cm)                                             | 65 in (165 cm)                                        |
| <b>GROUND CLEARANCE</b>   | 5.5 in (14 cm)                                             | 5.5 in (14 cm)                                        |
| <b>FUEL TANK CAPACITY</b> | 5.5 gal (20.8 L)                                           | N/A                                                   |
| <b>CURB WEIGHT</b>        | 863 lb (392 kg)                                            | 980 lb (445 kg)                                       |
| <b>SPEED RANGE</b>        | 15-17 mph (24-27 km/h)                                     | 5-17 mph (8-27 km/h)                                  |
| <b>LIMITED WARRANTY</b>   | 3 yr/3000 hr limited powertrain<br>1 yr limited commercial | 4 yr limited battery<br>1 yr limited commercial       |

White

Beige

Dark Gray

Dark Green

Titanium

Black

Classic Blue

Bright Blue

Red

Colors may vary by product



# Club Car Connect COMMERCIAL

## TRACKING

- GPS Tracker
- Asset Tracking
- Unlimited Geo-fence Zones
- Zone Alerts and History
- Club Car Connect Web Access



## TRACKING AND CONTROL

- All Tracker Features +
- 5 in. LCD Touchscreen
- Real Time Vehicle Diagnostics
- Fleet Service Management
- Car Control
- RFID Smart Key
- One Way Messaging



## TRACKING, CONTROL, AND ADVERTISING

- Tracker and Control +
- 10 in. LCD Touchscreen
- Advertising Geo-fence zones for Message Placement on Property
- Two Way Text Messaging
- Static or Video Advertising
- Advertising Manager
- Digital Vehicle Inspection Report



# CONNECTIVITY FROM A TO Z

## AIRPORTS TO ZOOS AND EVERYTHING IN BETWEEN

Visage Fleet Management is a proven technology focused on building relationships with commercial fleet managers. It brings an exclusive way to monitor the health of your fleet, maintain geographic boundaries, and communicate directly to vehicles.



### CAR CONTROL MODULE

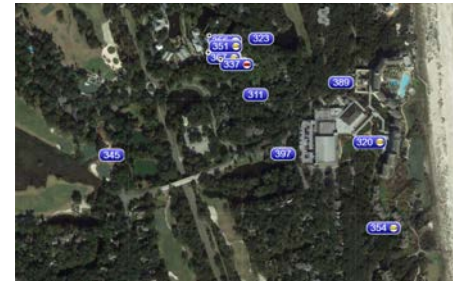
*Electric Club Car Only*

- Action zone and message setup
- Action zone speeds - Variable speed setting of up to 10 mph, stop, reverse or complete stop
- Unlimited restricted zone settings for anywhere on your property



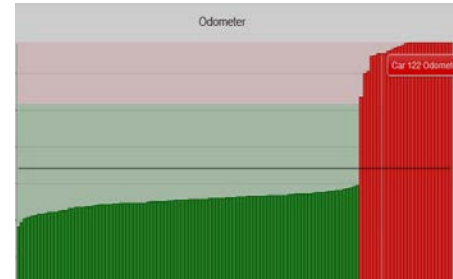
### DETAILED VEHICLE DRIVE HISTORY

- Available with control or tracking module
- Customizable by vehicle and date range
- Easily view exactly where your vehicle traveled and time spent at each location
- Helps to quickly analyze traffic patterns
- Hold drivers accountable in case of property or vehicle damage by reviewing movement and direction



### VEHICLE TRACKING MODULE

- Vehicle tracking in real time
- Two way messaging
- Special car setting designations for different staff vehicles
- "Car Tracks" displays car traffic for one or all cars to see wear patterns



### FLEET MANAGEMENT

*Electric Club Car Only*

- Available with control or tracking module on Club Car electric vehicles
- Fleet lock-down with scheduled lock and unlock settings, key fob feature to lock and unlock vehicles
- Fleet information - odometer readings, amp hours and update status
- Fleet maintenance management
- Specific car information - charge status
- Report on usage to improve vehicle rotation
- Information available from any computer, iPad and tablet connected to the internet