

**CARRYALL 300**

**Club Car**

## ***EFFICIENT DESIGN, TOUGH HAULING***

With enough power to handle tough tasks, the Carryall 300 is the most dependable utility vehicle in its class. Each vehicle comes standard with a cargo box, trailer hitch, and plenty of room for customization so you can build a car that'll get the job done right.



# CARRYALL




[www.clubcarsa.co.za](http://www.clubcarsa.co.za) | [info@afgriequipment.co.za](mailto:info@afgriequipment.co.za)

# CARRYALL 300

## PREMIER MANEUVERABILITY

Take on tight corners with more power. Rack-and-pinion steering makes the Carryall 300 easy to handle, giving you a safe and comfortable ride in any terrain.



-   
**Max Speed**  
17 mph
-   
**Max Vehicle Capacity**  
800 lbs
-   
**Horsepower**  
14 hp (gasoline)  
3.3 hp (electric)

## OPTIONS & ACCESSORIES

Ask your Club Car sales representative for details.



VersAttach™



Brush Guard



Cargo Box



Stakeside Kit



Curtis Cab



Rear Receiver Hitch



Ambulance Package

Security Package

# CARRYALL 300



**GASOLINE**



**ELECTRIC**

ENGINE	Kohler EFI Gas	48-volt DC
<b>HORSEPOWER</b>	14 hp (10.3 kW) rated @ 3600 RPM per SAE J1940	3.3 hp (2.4 kW) rated, peak 13 hp (9.6 kW)
<b>GOVERNOR GUARD</b>	Ground speed	N/A
<b>BATTERIES</b>	12-volt 500 CCA 105 min reserve	Six 8-volt flooded lead acid
<b>CHARGER</b>	N/A	ERIC (650 W high frequency)
<b>STEERING</b>	Self-adjusting rack and pinion	Self-adjusting rack and pinion
<b>FRONT SUSPENSION</b>	Independent leaf spring with dual hydraulic shocks	Independent leaf spring with dual hydraulic shocks
<b>BRAKES</b>	Rear mechanical drum	Rear mechanical drum
<b>PARK BRAKE</b>	Foot operated, multi-lock	Foot operated, multi-lock
<b>BODY AND FINISH</b>	ArmorFlex® with automotive paint/clearcoat, aluminum finish	ArmorFlex® with automotive paint/clearcoat, aluminum finish
<b>TIRES</b>	20 x 10-10, 6-ply	20 x 10-10, 6-ply
<b>BED L x W x H</b>	36.2 x 47.5 x 10.5 in (92 x 121 x 27 cm)	36.2 x 47.5 x 10.5 in (92 x 121 x 27 cm)
<b>WHEELBASE</b>	65.5 in (166 cm)	65.5 in (166 cm)
<b>GROUND CLEARANCE</b>	5.2 in (13 cm)	5.6 in (14 cm)
<b>FUEL TANK CAPACITY</b>	5.5 gal (20.8 L)	N/A
<b>CURB WEIGHT</b>	817 lb (371 kg)	1105 lb (501 kg)
<b>SPEED RANGE</b>	15-17 mph (24-27 km/h)	5-17 mph (8-27 km/h)
<b>LIMITED WARRANTY</b>	3 yr/3000 hr limited powertrain/frame 2 yr limited remaining vehicle	4 yr limited battery 3 yr limited powertrain/frame 2 yr limited remaining vehicle

White

Beige

Dark Gray

Dark Green

Titanium

Black

Classic Blue

Bright Blue

Red

Standard Colors (Molded-in)



# Club Car Connect **COMMERCIAL**

## TRACKING

- GPS Tracker
- Asset Tracking
- Unlimited Geo-fence Zones
- Zone Alerts and History
- Club Car Connect Web Access



## TRACKING AND CONTROL

- All Tracker Features +
- 5 in. LCD Touchscreen
- Real Time Vehicle Diagnostics
- Fleet Service Management
- Car Control
- RFID Smart Key
- One Way Messaging



## TRACKING, CONTROL, AND ADVERTISING

- Tracker and Control +
- 10 in. LCD Touchscreen
- Advertising Geo-fence zones for Message Placement on Property
- Two Way Text Messaging
- Static or Video Advertising
- Advertising Manager
- Digital Vehicle Inspection Report



# CONNECTIVITY FROM A TO Z

## AIRPORTS TO ZOOS AND EVERYTHING IN BETWEEN

Visage Fleet Management is a proven technology focused on building relationships with commercial fleet managers. It brings an exclusive way to monitor the health of your fleet, maintain geographic boundaries, and communicate directly to vehicles.



### CAR CONTROL MODULE

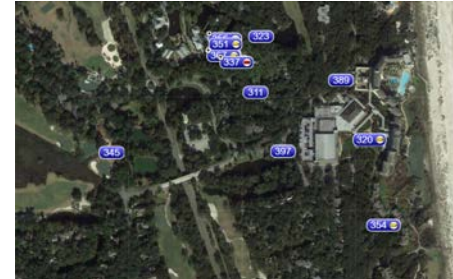
*Electric Club Car Only*

- Action zone and message setup
- Action zone speeds - Variable speed setting of up to 10 mph, stop, reverse or complete stop
- Unlimited restricted zone settings for anywhere on your property



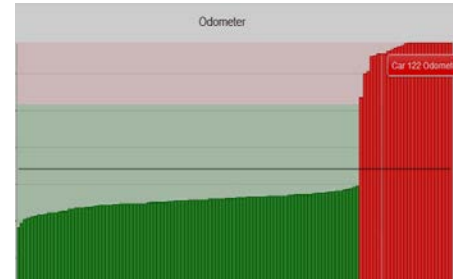
### DETAILED VEHICLE DRIVE HISTORY

- Available with control or tracking module
- Customizable by vehicle and date range
- Easily view exactly where your vehicle traveled and time spent at each location
- Helps to quickly analyze traffic patterns
- Hold drivers accountable in case of property or vehicle damage by reviewing movement and direction



### VEHICLE TRACKING MODULE

- Vehicle tracking in real time
- Two way messaging
- Special car setting designations for different staff vehicles
- "Car Tracks" displays car traffic for one or all cars to see wear patterns



### FLEET MANAGEMENT

*Electric Club Car Only*

- Available with control or tracking module on Club Car electric vehicles
- Fleet lock-down with scheduled lock and unlock settings, key fob feature to lock and unlock vehicles
- Fleet information - odometer readings, amp hours and update status
- Fleet maintenance management
- Specific car information - charge status
- Report on usage to improve vehicle rotation
- Information available from any computer, iPad and tablet connected to the internet