

Unmatched versatility, exceptional reliability

The Club Car Carryall is an industry workhorse, renowned for its ease of use and day-in, day-out durability. With multiple models and accessories available, you'll find the Carryall that fits your course—and works as hard as your crew.




Standard Colors



Dark Gray



White



Dark Green



Bright Blue

Premium Colors



Beige



Classic Blue



Titanium Silver



Red

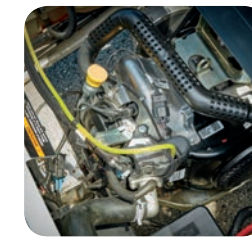


Black

Where Our Standards Meet Yours

The Carryall 502 combines the features you need most to do your best work with the quality, performance, and engineering of our 500 series. No detail was left out to ensure this vehicle works as intuitively and relentlessly as you do.

MORE SPACE FOR EQUIPMENT



POWER AND RELIABILITY IN ANY ENVIRONMENT

KOHLER OVERHEAD VALVE EFI ENGINE

At the heart of Carryall hums our new power plant, sporting a 14 horsepower rated engine. The overhead cam engine with electronic fuel injection (EFI) delivers a 30% power boost and still reduces fuel consumption by up to 50%.*

SAVE ON MORE THAN JUST FUEL COSTS.

- Build quality, including case-hardened steel timing chain, lowers maintenance costs
- Runs cooler, quieter, with lower emissions
- Weathers all conditions; starts fast even on the coldest mornings
- Automatically adjusts for higher altitudes
- No carburetor or choke to master or maintain
- No oil filter to change; splash lubrication reduces maintenance
- Backed by the industry's best warranty



E.R.I.C.

EFFICIENT RELIABLE INTELLIGENT CONNECTED

The Carryall 300 Turf is the only utility vehicle equipped with E.R.I.C., Club Car's advanced charging system. Efficient. Reliable. Intelligent. Connected. E.R.I.C. does it all. With cutting-edge features built into a smaller, lighter, and infinitely smarter design, E.R.I.C. will have an immediate impact on your operation.

OPTIONS & ACCESSORIES

More accessories available. Ask your Club Car sales representative for details.



Canopy Top



Heavy-Duty Brush Guard



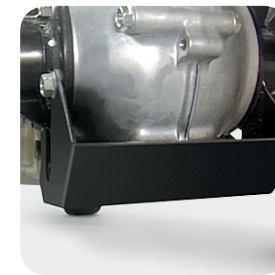
Stakeside Kit



Hitch



Electric Bed Lift



Differential Guard



Heavy-Duty Batteries



Battery Capacity Indicator



5-Spoke Wheel Cover



Fuel Gauge



ROPS Cab
(Front Hinge Door)



USB Port



Soft Doors



Cab Outside Mirrors



LED Headlights



Cargo Tool Box



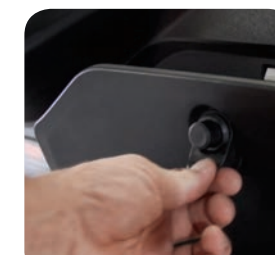
Limited Slip Differential



Extra-Traction Turf Tires



Small Wheel Package



Locking Glove Box

Haul more gear, more securely, using VersAttach™

VersAttach, the bed box rail system exclusively from Club Car, expands your payload while securing whatever's on board. Sturdy channels engineered into the walls of the cargo box accept a variety of attachments—cleats, hooks, and clamps—for storing, tying down, and protecting tools and gear in transit.



A variety of equipment—cleats, hooks, clamps—is available to fit tools and cargo



Secure expensive power tools, protecting them from transit damage



Attachment clamps are injection molded for solid fit and dependable performance



Add/remove/relocate clamps and tie-downs to fit your cargo



Reinforced aluminum channels can handle almost any load

For the long haul

When it comes to maximizing your investment on a hardworking vehicle, nothing fits the bill like a Carryall 700. With 1500 pounds of capacity and almost six feet of cargo space, it handles your course's most demanding jobs, all day long.

CARRYALL 700



CARRYALL1500

The Gentle Giant

Call on the Carryall 1500 2WD for the heavy-duty jobs when you still need to tread lightly and protect your course.

Enjoy some of the highest ground clearance, steady handling on rough terrain, and upgradeable load capabilities up to 3/4 of a ton.



CARRYALL 300 TURF



ELECTRIC

GASOLINE

CARRYALL 500 TURF



ELECTRIC

GASOLINE

CARRYALL 502 TURF



ELECTRIC

GASOLINE

	ELECTRIC	GASOLINE	ELECTRIC	GASOLINE	ELECTRIC	GASOLINE
ENGINE/MOTOR TYPE	48-volt DC	Kohler EFI, 4-cycle Gas	48-volt DC	Kohler EFI, 4-cycle Gas	48-volt DC	Kohler EFI, 4-cycle Gas
CONTROLLER	250 Amp - Solid state	N/A	500 Amp - Solid state	N/A	500 Amp - Solid state	N/A
DISPLACEMENT	N/A	404 cc	N/A	404 cc	N/A	404 cc
CYLINDERS	N/A	Single	N/A	Single	N/A	Single
VALVING	N/A	Overhead cam	N/A	Overhead cam	N/A	Overhead cam
COOLING	N/A	Air cooled	N/A	Air cooled	N/A	Air cooled
HORSEPOWER (RATED)	3.3 hp (2.4 kW) rated, peak 13 hp (9.6 kW)	14.0 hp (10.3 kW) rated @ 3600 rpm per SAE J1940	3.7 hp (2.7kW) rated, peak 20 hp (14.9 kW)	14.0 hp (10.3 kW) rated @ 3600 rpm per SAE J1940	3.7 hp (2.7kW) rated, peak 20 hp (14.9 kW)	14.0 hp (10.3 kW) rated @ 3600 rpm per SAE J1940
MAX TORQUE	34.5 ft-lb (46.7 Nm) rated @ 1980 rpm	19.91 ft-lb (27.0 Nm) rated @ 2400 rpm	71 ft-lb (96.2 Nm) rated @ 1450 rpm	19.91 ft-lb (27.0 Nm) rated @ 2400 rpm	71 ft-lb (96.2 Nm) rated @ 1450 rpm	19.91 ft-lb (27.0 Nm) rated @ 2400 rpm
LUBRICATION	N/A	Splash lubrication	N/A	Splash lubrication	N/A	Splash lubrication
GOVERNOR	N/A	Ground speed	N/A	Ground speed	N/A	Ground speed
TRANSMISSION	Direct drive, double reduction helical gear	Continuously Variable Transmission (CVT)	Direct drive, double reduction helical gear	Continuously Variable Transmission (CVT)	Direct drive, double reduction helical gear	Continuously Variable Transmission (CVT)
FRONT/REAR DIFFERENTIAL	N/A	N/A	N/A	N/A	N/A	N/A
GEAR SELECTION	Forward/Neutral/Reverse	Forward/Neutral/Reverse	Forward/Neutral/Reverse	Forward/Neutral/Reverse	Forward/Neutral/Reverse	Forward/Neutral/Reverse
GEAR RATIO	12.32:1	11.47:1 forward; 15.63:1 reverse	12.32:1	11.47:1 forward; 15.63:1 reverse	12.32:1	11.47:1 forward; 15.63:1 reverse
IGNITION	N/A	Capacitive discharge	N/A	Capacitive discharge	N/A	Capacitive discharge
BATTERY	Six 8-volt flooded lead acid	12-volt 500 CCA 105 min reserve	Eight 6-volt flooded lead acid	12-volt 500 CCA 105 min reserve	Eight 6-volt flooded lead acid	12-volt 500 CCA 105 min reserve
CHARGER	E.R.I.C. (650 W high frequency)	N/A	On-board DeltaQ QuiQ (1 kW high frequency)	N/A	On-board DeltaQ QuiQ (1 kW high frequency)	N/A
HEADLIGHTS	Two 37.5 watt halogen	Two 37.5 watt halogen	Two 37.5 watt halogen	Two 37.5 watt halogen	Two 37.5 watt halogen	Two 37.5 watt halogen
FUEL DELIVERY SYSTEM	N/A	Electronic Fuel Injection (EFI)	N/A	Electronic Fuel Injection (EFI)	N/A	Electronic Fuel Injection (EFI)
FUEL CAPACITY	N/A	5.5 gal (20.8 L)	N/A	5.5 gal (20.8 L)	N/A	5.5 gal (20.8 L)
STEERING MECHANISM	Self-adjusting rack and pinion	Self-adjusting rack and pinion	Self-adjusting rack and pinion	Self-adjusting rack and pinion	Self-adjusting rack and pinion	Self-adjusting rack and pinion
SUSPENSION (FRONT)	Independent leaf spring with dual hydraulic shocks	Independent leaf spring with dual hydraulic shocks	Independent leaf spring with dual hydraulic shocks	Independent leaf spring with dual hydraulic shocks	Independent leaf spring with dual hydraulic shocks	Independent leaf spring with dual hydraulic shocks
SUSPENSION (REAR)	Semi-independent leaf spring with dual hydraulic shocks	Semi-independent leaf spring with dual hydraulic shocks	Semi-independent leaf spring with dual hydraulic shocks	Semi-independent leaf spring with dual hydraulic shocks	Semi-independent leaf spring with dual hydraulic shocks	Semi-independent leaf spring with dual hydraulic shocks
BRAKES	Rear-wheel, self-adjusting mechanical drum	Rear-wheel, self-adjusting mechanical drum	4-wheel mechanical drum	4-wheel mechanical drum	4-wheel mechanical drum	4-wheel mechanical drum
PARK BRAKE	Foot operated, multi-lock	Foot operated, multi-lock	Foot operated, multi-lock	Foot operated, multi-lock	Foot operated, multi-lock	Foot operated, multi-lock
BODY (FRONT & FINISH)	ArmorFlex® with automotive paint/clearcoat, aluminum finish	ArmorFlex® with automotive paint/clearcoat, aluminum finish	ArmorFlex® with automotive paint/clearcoat, aluminum finish	ArmorFlex® with automotive paint/clearcoat, aluminum finish	ArmorFlex® with automotive paint/clearcoat, aluminum finish	ArmorFlex® with automotive paint/clearcoat, aluminum finish
BODY (FRAME & REAR)	Aluminum	Aluminum	Aluminum	Aluminum	Aluminum	Aluminum
TIRES (FRONT)	20 x 10-10, 6-ply	20 x 10-10, 6-ply	20 x 10-10, 6-ply	20 x 10-10, 6-ply	18 x 8.50 - 8, 6-ply	18 x 8.50 - 8, 6-ply
TIRES (REAR)	20 x 10-10, 6-ply	20 x 10-10, 6-ply	20 x 10-10, 6-ply	20 x 10-10, 6-ply	18 x 8.50 - 8, 6-ply	18 x 8.50 - 8, 6-ply
WHEELBASE	65.5 in (166 cm)	65.5 in (166 cm)	78.1 in (198 cm)	78.1 in (198 cm)	78.1 in (198 cm)	78.1 in (198 cm)
OVERALL HEIGHT	47.1 in (120 cm)	47.1 in (120 cm)	47.1 in (120 cm)	47.1 in (120 cm)	47.1 in (120 cm)	47.1 in (120 cm)
OVERALL LENGTH	110.1 in (279.6 cm)	110.1 in (279.6 cm)	118 in (299.7 cm)	118 in (299.7 cm)	118 in (299.7 cm)	118 in (299.7 cm)
BED L X W X H (CARGO BOX)	36.2 x 47.5 x 10.5 in (91.9 x 120.6 x 26.6 cm)	36.2 x 47.5 x 10.5 in (91.9 x 120.6 x 26.6 cm)	44.2 x 47.5 x 10.5 in (112.2 x 120.6 x 26.6 cm)	44.2 x 47.5 x 10.5 in (112.2 x 120.6 x 26.6 cm)	44.2 x 47.5 x 10.5 in (112.2 x 120.6 x 26.6 cm)	44.2 x 47.5 x 10.5 in (112.2 x 120.6 x 26.6 cm)
DIFFERENTIAL GROUND CLEARANCE	5.6 in (14 cm)	5.2 in (13 cm)	5.6 in (14 cm)	5.6 in (14 cm)	4.2 in (10.7 cm)	4.2 in (10.7 cm)
TRACK WIDTH (FRONT)	36.6 in (93 cm)	36.6 in (93 cm)	36.6 in (93 cm)	36.6 in (93 cm)	36.6 in (93 cm)	36.6 in (93 cm)
TRACK WIDTH (REAR)	39.5 in (100 cm)	39.5 in (100 cm)	39.5 in (100 cm)	39.5 in (100 cm)	39.5 in (100 cm)	39.5 in (100 cm)
MAX WIDTH (W/O MIRRORS)	50.3 in (128 cm)	50.3 in (128 cm)	50.3 in (128 cm)	50.3 in (128 cm)	50.3 in (128 cm)	50.3 in (128 cm)
CURB WEIGHT (W/ BATTERIES)	1105 lb (501 kg)	817 lb (371 kg)	1393 lb (632 kg)	907 lb (411 kg)	1393 lb (632 kg)	907 lb (411 kg)
TOTAL VEHICLE CAPACITY	800 lb (363 kg)	800 lb (363 kg)	1200 lb (544 kg)	1200 lb (544 kg)	1200 lb (544 kg)	1200 lb (544 kg)
BED LOAD CAPACITY	300 lb (136 kg)	300 lb (136 kg)	800 lb (363 kg)	800 lb (363 kg)	800 lb (363 kg)	800 lb (363 kg)
TOWING CAPACITY	800 lb (363 kg)	800 lb (363 kg)	1500 lb (680 kg)	1500 lb (680 kg)	1500 lb (680 kg)	1500 lb (680 kg)
COMBINED GROSS VEHICLE CAPACITY	800 lb (363 kg)	800 lb (363 kg)	1500 lb (680 kg)	1500 lb (680 kg)	1500 lb (680 kg)	1500 lb (680 kg)
SPEED	5-17 mph (8-27 km/h)	15-17 mph (24-27 km/h)	5-17 mph (8-27 km/h)	15-17 mph (24-27 km/h)	5-17 mph (8-27 km/h)	15-17 mph (24-27 km/h)
TURNING RADIUS	108.7 in (276 cm)	108.7 in (276 cm)	119 in (302 cm)	119 in (302 cm)	119 in (302 cm)	119 in (302 cm)
WARRANTY	4-year limited battery; 3-year limited powertrain/frame; 2-year limited remaining vehicle	3-year/3000 hour limited powertrain/frame; 2-year limited remaining vehicle	4-year limited battery; 3-year limited powertrain/frame; 2-year limited remaining vehicle	3-year/3000 hour limited powertrain/frame; 2-year limited remaining vehicle	4-year limited battery; 3-year limited powertrain/frame; 2-year limited remaining vehicle	3-year/3000 hour limited powertrain/frame; 2-year limited remaining vehicle

CARRYALL 550 TURF



ELECTRIC

GASOLINE

CARRYALL 700 TURF



ELECTRIC

GASOLINE

CARRYALL 1500 4X2



GASOLINE†

ENGINE/MOTOR TYPE	48-volt DC	Kohler EFI, 4-cycle Gas	48-volt DC	Kohler EFI, 4-cycle Gas	Kawasaki 4-cycle, industrial grade
CONTROLLER	500 Amp - Solid state	N/A	500 Amp - Solid state	N/A	N/A
DISPLACEMENT	N/A	404 cc	N/A	404 cc	675 cc
CYLINDERS	N/A	Single	N/A	Single	Twin-cylinder
VALVING	N/A	Overhead cam	N/A	Overhead cam	OHV
COOLING	N/A	Air cooled	N/A	Air cooled	Air cooled
HORSEPOWER (RATED)	3.7 hp (2.7kW) rated, peak 20 hp (14.9 kW)	14.0 hp (10.3 kW) rated @ 3600 rpm per SAE J1940	3.7 hp (2.7kW) rated, peak 20 hp (14.9 kW)	14.0 hp (10.3 kW) rated @ 3600 rpm per SAE J1940	20.1 hp (15.0 kW) rated @ 3400 rpm per SAE J1349
MAX TORQUE	71 ft-lb (96.2 Nm) rated @ 1450 rpm	19.91 ft-lb (27.0 Nm) rated @ 2400 rpm	71 ft-lb (96.2 Nm) rated @ 1450 rpm	19.91 ft-lb (27.0 N-m) rated @ 2400 rpm	36.5 ft/lb (49.5 Nm)
LUBRICATION	N/A	Splash lubrication	N/A	Splash lubrication	Full-pressure, spin-on oil filter
GOVERNOR	N/A	Ground speed	N/A	Ground speed	Automatic ground speed sensing
TRANSMISSION	Direct drive, double reduction helical gear	Continuously Variable Transmission (CVT)	Direct drive, double reduction helical gear	Continuously Variable Transmission (CVT)	Wide ratio CVT; 3.7:1 low, 0.59:1 high
FRONT/REAR DIFFERENTIAL	N/A	N/A	N/A	N/A	Automatic locking rear differential
GEAR SELECTION	Forward/Neutral/Reverse	Forward/Neutral/Reverse	Forward/Neutral/Reverse	Forward/Neutral/Reverse	Forward/Neutral/Reverse
GEAR RATIO	12.32:1	11.47:1 forward; 15.63:1 reverse	12.32:1	11.47:1 forward; 15.63:1 reverse	5.39:1 forward, 7.79:1 reverse, 3.3:1 differential
IGNITION	N/A	Capacitive discharge	N/A	Capacitive discharge	Transistorized magneto
BATTERY	Eight 6-volt flooded lead acid	12-volt 500 CCA 105 min reserve	Eight 6-volt flooded lead acid	12-volt 500 CCA 105 min reserve	12-volt 500 CCA 105 min reserve
CHARGER	On-board DeltaQ QuiQ (1 kW high frequency)	N/A	On-board DeltaQ QuiQ (1 kW high frequency)	N/A	N/A
HEADLIGHTS	Two 37.5 watt halogen	Two 37.5 watt halogen	Two 37.5 watt halogen	Two 37.5 watt halogen	Two 55 watt halogen
FUEL DELIVERY SYSTEM	N/A	Electronic Fuel Injection (EFI)	N/A	Electronic Fuel Injection (EFI)	Carburetor
FUEL CAPACITY	N/A	5.5 gal (20.8 L)	N/A	5.5 gal (20.8 L)	6.5 gal (24.6 L)
STEERING MECHANISM	Self-adjusting rack and pinion	Self-adjusting rack and pinion	Self-adjusting rack and pinion	Self-adjusting rack and pinion	Rack and pinion with tilt steering
SUSPENSION (FRONT)	Independent leaf spring with dual hydraulic shocks	Independent leaf spring with dual hydraulic shocks	Independent leaf spring with dual hydraulic shocks	Independent leaf spring with dual hydraulic shocks	Independent double A-arms with coil-over shocks
SUSPENSION (REAR)	Semi-independent leaf spring with dual hydraulic shocks	Semi-independent leaf spring with dual hydraulic shocks	Semi-independent leaf spring with dual hydraulic shocks	Semi-independent leaf spring with dual hydraulic shocks	Semi-independent 4-link solid axle
BRAKES	4-wheel mechanical drum	4-wheel mechanical drum	4-wheel mechanical drum	4-wheel mechanical drum	Twin piston front, single piston rear hydraulic disc
PARK BRAKE	Foot operated, multi-lock	Foot operated, multi-lock	Foot operated, multi-lock	Foot operated, multi-lock	Mechanical disc
BODY (FRONT & FINISH)	ArmorFlex® with automotive paint/clearcoat, aluminum finish	ArmorFlex® with automotive paint/clearcoat, aluminum finish	ArmorFlex® with automotive paint/clearcoat, aluminum finish	ArmorFlex® with automotive paint/clearcoat, aluminum finish	GE Geloy high-impact, scratch-resistant, injection-molded color, automotive finish
BODY (FRAME & REAR)	Aluminum	Aluminum	Aluminum	Aluminum	Tubular aluminum
TIRES (FRONT)	22 x 10-10, 4-ply turf tread; 22 x 10-10, 6-ply heavy-duty all-terrain	22 x 10-10, 4-ply turf tread; 22 x 10-10, 6-ply heavy-duty all-terrain	20 x 10-10, 6-ply	20 x 10-10, 6-ply	4-ply turf; 23 x 10.5 x 12
TIRES (REAR)	22 x 10-10, 4-ply turf tread; 22 x 10-10, 6-ply heavy-duty all-terrain	22 x 10-10, 4-ply turf tread; 22 x 10-10, 6-ply heavy-duty all-terrain	20 x 10-10, 6-ply	20 x 10-10, 6-ply	4-ply turf; 24 x 10.5 .x 12
WHEELBASE	78.1 in (198 cm)	78.1 in (198 cm)	99.1 in (252 cm)	99.1 in (252 cm)	88.7 in (225 cm)
OVERALL HEIGHT	51.2 in (130 cm)	51.2 in (130 cm)	47.1 in (120 cm)	47.1 in (120cm)	52.6 in (134 cm)
OVERALL LENGTH	118 in (300 cm)	118 in (300 cm)	137.5 in (349 cm)	137.5 in (349 cm)	124.6 in (317 cm)
BED L X W X H (CARGO BOX)	44.2 x 47.5 x 10.5 in (112 x 121 x 27 cm)	44.2 x 47.5 x 10.5 in (112 x 121 x 27 cm)	65.5 x 47.5 x 10.5 in (166 x 121 x 27 cm)	65.5 x 47.5 x 10.5 in (166 x 121 x 27 cm)	48.8 x 49.8 x 10.9 in (124 x 127 x 28 cm)
DIFFERENTIAL GROUND CLEARANCE	6.4 in (16.3 cm)	6.4 in (16.3 cm)	5.6 in (14.2 cm)	5.6 in (14.2 cm)	7.3 in (19 cm)
TRACK WIDTH (FRONT)	36.6 in (93 cm)	36.6 in (93 cm)	36.6 in (93 cm)	36.6 in (93 cm)	48.8 in (124 cm)
TRACK WIDTH (REAR)	39.5 in (100 cm)	39.5 in (100 cm)	39.5 in (100 cm)	39.5 in (100 cm)	48.8 in (124 cm)
MAX WIDTH (W/O MIRRORS)	50.3 in (128 cm)	50.3 in (128 cm)	50.3 in (128 cm)	50.3 in (128 cm)	58.5 in (149 cm)
CURB WEIGHT (W/ BATTERIES)	1402 lb (636 kg)	942 lb (427 kg)	1475 lb (669 kg)	993 lb (450 kg)	1410 lb (640 kg)
TOTAL VEHICLE CAPACITY	900 lb (408 kg)	900 lb (408 kg)	1500 lb (680 kg)	1500 lb (680 kg)	1450 lb (658 kg)/1900 lb (862 kg)*
BED LOAD CAPACITY	500 lb (227 kg)	500 lb (227 kg)	1000 lb (454 kg)	1000 lb (454 kg)	1050 lb (476 kg)/1500 lb (680 kg)*
TOWING CAPACITY	900 lb (408 kg)	900 lb (408 kg)	1500 lb (680 kg)	1500 lb (680 kg)	1450 lb (658 kg)/1900 lb (862 kg)*
COMBINED GROSS VEHICLE CAPACITY	900 lb (408 kg)	900 lb (408 kg)	1500 lb (680 kg)	1500 lb (680 kg)	1450 lb (658 kg)/1900 lb (862 kg)*
SPEED	15-17 mph (24-27 km/h)	5-17 mph (8-27 km/h)	5-17 mph (8-27 km/h)	15-17 mph (24-27 km/h)	19 mph (30.6 km/h)
TURNING RADIUS	126.5 in (321 cm)	126.5 in (321 cm)	162.8 in (413 cm)	162.8 in (413 cm)	150.5 in (382 cm)
WARRANTY	4-year limited battery; 3-year limited powertrain/frame; 2-year limited remaining vehicle	3-year/3000 hour limited powertrain/frame; 2-year limited remaining vehicle	4-year limited battery; 3-year limited powertrain/frame; 2-year limited remaining vehicle	3-year/3000 hour limited powertrain/frame; 2-year limited remaining vehicle	2-year/2000 hour limited

*3/4-ton option. ** High-capacity option. †Not available in the EU and other CE requiring countries.

CARRYALL 1500 4X4



GASOLINE†

DIESEL

CARRYALL 1700 4X4



GASOLINE†

DIESEL

ENGINE/MOTOR TYPE	Kawasaki 4-cycle, industrial grade	Kubota D722, industrial grade	Kawasaki 4-cycle, industrial grade	Kubota D722, industrial grade
CONTROLLER	N/A	N/A	N/A	N/A
DISPLACEMENT	675 cc	719 cc	675 cc	719 cc
CYLINDERS	Twin-cylinder	3-cylinder	Twin-cylinder	3-cylinder
VALVING	OHV	OHV	OHV	OHV
COOLING	Air cooled	Liquid cooled	Air cooled	Liquid cooled
HORSEPOWER (RATED)	20.1 hp (15.0 kW) rated @ 3400 rpm per SAE J1349	20.0 hp (15.0 kW) rated @ 3600 rpm per SAE J1995	20.1 hp (15.0 kW) rated @ 3400 rpm per SAE J1349	20.0 hp (15.0 kW) rated @ 3600 rpm per SAE J1995
MAX TORQUE	36.5 ft/lb (49.5 Nm)	33 ft/lb (45 Nm)	36.5 ft/lb (49.5 Nm)	33 ft/lb (45 Nm)
LUBRICATION	Full-pressure, spin-on oil filter	Full-pressure, spin-on oil filter	Full-pressure, spin-on oil filter	Full-pressure, spin-on oil filter
GOVERNOR	Automatic ground speed sensing	Automatic ground speed sensing	Automatic ground speed sensing	Automatic ground speed sensing
TRANSMISSION	Wide ratio CVT; 3.7:1 low, 0.59:1 high	Wide ratio CVT; 3.7:1 low, 0.59:1 high	Wide ratio CVT; 3.7:1 low, 0.59:1 high	Wide ratio CVT; 3.7:1 low, 0.59:1 high
FRONT/REAR DIFFERENTIAL	IntelliTrak™ Automatic 4-wheel Drive	IntelliTrak™ Automatic 4-wheel Drive	IntelliTrak™ Automatic 4-wheel Drive	IntelliTrak™ Automatic 4-wheel Drive
GEAR SELECTION	Forward/Neutral/Reverse	Forward/Neutral/Reverse	Forward/Neutral/Reverse	Forward/Neutral/Reverse
GEAR RATIO	5.39:1 forward, 7.79:1 reverse, 3.3:1 differential	5.39:1 forward, 7.79:1 reverse, 3.3:1 differential	5.39:1 forward, 7.79:1 reverse, 3.3:1 differential	5.39:1 forward, 7.79:1 reverse, 3.3:1 differential
IGNITION	Transistorized magneto	Compression	Transistorized magneto	Compression
BATTERY	12-volt 500 CCA 105 min reserve	12-volt 500 CCA 105 min reserve	12-volt 500 CCA 105 min reserve	12-volt 500 CCA 105 min reserve
CHARGER	N/A	N/A	N/A	N/A
HEADLIGHTS	Two 55 watt halogen	Two 55 watt halogen	Two 55 watt halogen	Two 55 watt halogen
FUEL DELIVERY SYSTEM	Carburetor	Mechanical injection	Carburetor	Mechanical injection
FUEL CAPACITY	6.5 gal (24.6 L)	6.5 gal (24.6 L)	6.5 gal (24.6 L)	6.5 gal (24.6 L)
STEERING MECHANISM	Rack and pinion with tilt steering	Rack and pinion with tilt steering	Rack and pinion with tilt steering	Rack and pinion with tilt steering
SUSPENSION (FRONT)	Independent double A-arms with coil-over shocks	Independent double A-arms with coil-over shocks	Independent double A-arms with coil-over shocks	Independent double A-arms with coil-over shocks
SUSPENSION (REAR)	Semi-independent 4-link solid axle	Semi-independent 4-link solid axle	Semi-independent 4-link solid axle	Semi-independent 4-link solid axle
BRAKES	Twin piston front, single piston rear hydraulic disc	Twin piston front, single piston rear hydraulic disc	Twin piston front, single piston rear hydraulic disc	Twin piston front, single piston rear hydraulic disc
PARK BRAKE	Mechanical disc	Mechanical disc	Mechanical disc	Mechanical disc
BODY (FRONT & FINISH)	GE Gelyo high-impact, scratch-resistant, injection-molded color, automotive finish	GE Gelyo high-impact, scratch-resistant, injection-molded color, automotive finish	GE Gelyo high-impact, scratch-resistant, injection-molded color, automotive finish	GE Gelyo high-impact, scratch-resistant, injection-molded color, automotive finish
BODY (FRAME & REAR)	Tubular aluminum	Tubular aluminum	Tubular aluminum	Tubular aluminum
TIRES (FRONT)	All-terrain, 25 x 10.5-12, 4-ply	All-terrain, 25 x 10.5-12, 4-ply	All-terrain, 25 x 10.5-12, 4-ply	All-terrain, 25 x 10.5-12, 4-ply
TIRES (REAR)	All-terrain, 25 x 10.5-12, 4-ply	All-terrain, 25 x 10.5-12, 4-ply	All-terrain, 25 x 10.5-12, 4-ply	All-terrain, 25 x 10.5-12, 4-ply
WHEELBASE	82 in (208 cm)	82 in (208 cm)	114 in (290 cm)	114 in (290 cm)
OVERALL HEIGHT	78.6 in (200 cm)	78.6 in (200 cm)	78.6 in (200 cm)	78.6 in (200 cm)
OVERALL LENGTH	124.6 in (317 cm)	124.6 in (317 cm)	157.6 in (400 cm)	157.6 in (400 cm)
BED L X W X H (CARGO BOX)	48.8 x 49.8 x 10.9 in (124 x 127 x 28 cm)	48.8 x 49.8 x 10.9 in (124 x 127 x 28 cm)	48.8 x 49.8 x 10.9 in (124 x 127 x 28 cm)	48.8 x 49.8 x 10.9 in (124 x 127 x 28 cm)
DIFFERENTIAL GROUND CLEARANCE	8.2 in (21 cm)	8.2 in (21 cm)	8.2 in (21 cm)	8.2 in (21 cm)
TRACK WIDTH (FRONT)	48.8 in (124 cm)	48.8 in (124 cm)	48.8 in (124 cm)	48.8 in (124 cm)
TRACK WIDTH (REAR)	48.8 in (124 cm)	48.8 in (124 cm)	48.8 in (124 cm)	48.8 in (124 cm)
MAX WIDTH (W/O MIRRORS)	58.5 in (149 cm)	58.5 in (149cm)	58.5 in (149 cm)	58.5 in (149 cm)
CURB WEIGHT (W/ BATTERIES)	1430 lbs (649 kg)	1550 lbs (703 kg)	1630 lb (739 kg)	1750 lb (794 kg)
TOTAL VEHICLE CAPACITY	1200 lb (544 kg) 1450 lb (658 kg)**	1200 lb (544 kg) 1450 lb (658 kg)**	1600 lb (726 kg)	1600 lb (726 kg)
BED LOAD CAPACITY	800 lb (363 kg) 1050 lb (658 kg)**	800 lb (363 kg) 1050 lb (658 kg)**	800 lb (363 kg)	800 lb (363 kg)
TOWING CAPACITY	2000 lb (907 kg)	2000 lb (907 kg)	2000 lb (907 kg)	2000 lb (907 kg)
COMBINED GROSS VEHICLE CAPACITY	2000 lb (907 kg)	2000 lb (907 kg)	1800 lb (817 kg)	1800 lb (817 kg)
SPEED	25 mph (40.2 km/h)	25 mph (40.2 km/h)	25 mph (40.2 km/h)	25 mph (40.2 km/h)
TURNING RADIUS	150.5 in (382 cm)	150.5 in (382 cm)	206.5 in (525 cm)	206.5 in (525 cm)
WARRANTY	2-year/2000 hour limited	2-year/2000 hour limited	2-year/2000 hour limited	2-year/2000 hour limited

*3/4-ton option. ** High-capacity option. †Not available in the EU and other CE requiring countries.